

# SMART ENCLOSURES FOR SMART INDUSTRY



**OKW**  
GEHÄUSE  
SYSTEME



### LOGISTICS 4.0/SMART LOGISTICS

Intelligent technologies are making their way into the world of manufacturing and production – and increasingly into logistics too. Systems are being developed in the transport sector, in internal warehousing and for analysing the movement of materials and products. Materials are being moved automatically, production supplied autonomously and transport routes made more efficient. Modern communications, tracking and identification technologies play a vital part.



# INTELLIGENT ENCLOSURE TECHNOLOGY FOR THE DIGITAL FACTORY

### MINI-DATA-BOX

MINI-DATA-BOX's compact size and technical features make it perfect for a wide range of applications.



IIoT (Industrial Internet of Things) technology or Industry 4.0 controls production processes, constantly monitoring them and identifying potential for improvement. Sensors and data play a central role, providing the basis for automation and self-learning machines.

IIoT devices are equipped with sensitive, precise sensors. This places special demands on the housing of these diverse sensor technologies. OKW enclosures are optimally designed for smart factory applications: they are available as mobile and wearable enclosures, as wall-mounted or as table-top versions. These smart sealed enclosures are robust, available in different sizes and versions, and with a wide range of accessories.



# INTO A SMARTER FUTURE WITH SMART ENCLOSURES



**NET-BOX**  
Slim, stylish wall-mount enclosures for control units, network nodes and more. Connectors are hidden under the front lid.



**SMART-PANEL**  
Smart wall-mount touchscreen enclosures for intelligent building-control systems. They fit standard cavity wall boxes.



**PROTEC**  
Square control centre enclosures for desk and wall electronics. Ideal for touchscreens. Choose from three versions.



**SMART-CONTROL**  
Wedge-shaped enclosures for easy installation in corners. They can also be mounted on flat walls or ergonomically inclined for desktop use.



**BODY-CASE**  
Comfortable enclosures for personal electronics worn on or close to the body.



**SMART-TERMINAL**  
Robust and elegant extruded aluminium/plastic enclosures. Custom lengths are available.



**RAILTEC B**  
This enclosure range allows simple and quick snap-on mounting on DIN rails (EN 60715 TH35).



**RAILTEC B/C**  
Comprehensive range of enclosures for DIN EN 60715 rail mounting as well as for direct wall mounting.



**EASYTEC**  
Flanged enclosures for rapid mounting on walls and tubes/round profiles.







#### DATEC-COMPACT

Handheld enclosure with a high protection class and robust design. Ideal for use as a mobile measuring device – whether indoors or outdoors.



#### SOFT-CASE

Large display area, can be used universally as a handheld, tabletop or wall-mount enclosure.



#### INTERFACE-TERMINAL

Versatile for use as a mobile unit, with a charging/docking station, as a desktop or wall-mount enclosure, each in three sizes.



#### SMART-BOX

Modern enclosure range with high protection class up to IP 66 for challenging applications.



#### IN-BOX

High protection class of IP 66/IP 67 and impact resistance of IK07/IK08. Also available with a transparent top.



#### MINI-DATA-BOX

Smart sensor enclosures with/without flanges for fast mounting to walls, ceilings, rails and tubes.

# INNOVATIVE ENCLOSURES FOR NEW TECHNOLOGY

Our standard enclosures offer innovative and practical design features and compatibility. These include solutions for the power supply, the installation of standardised displays, high protection classes, high-quality and easy-to-clean materials, recessed surfaces for the protection of membrane keypads and displays, as well as recessed surfaces for interfaces. A wide range of accessories allows you to provide the enclosures with additional functionality.



#### SOLID-BOX

Robust, stylish IP 66/IP 67 enclosures for industrial electronics. IK08 impact protection.





**TOP-KNOBS**

Award-winning tuning knobs in two versions: lateral fixing screw (DIN 41591) or D-shaft. The lateral fixing screw is concealed by functional marking elements in different colours and shapes.



**COM-KNOBS**

The COM-KNOBS range of tuning knob supports the appearance of modern medical applications. Safe operation is ensured by means of a collet fixture for rotary potentiometers with round shaft ends in accordance with DIN 41591.



**CONTROL-KNOBS**  
New ergonomic CONTROL-KNOBS have a soft-touch surface which is easy to grip and feels comfortable in operation. The high-quality appearance – illuminated if required – distinguishes this advanced range of tuning knobs as the central element of menu-driven interfaces.



# EASY TO RECOGNISE AND OPERATE

The OKW range of tuning knobs is tried and tested for rotary potentiometers with round and flattened shaft ends in accordance with DIN 41591 or 6/4.6 mm. The knobs are fitted using the proven collet fixture, lateral screw fixing or simply by pushing them on.

Choose from round knobs, wing knobs, spindle-shaped knobs, pointer knobs or simple rotary switches. Different sizes and combinations offer a wide range of possible solutions.



**STAR-KNOBS**

Our STAR-KNOBS are designed for menu-driven interfaces, click rotation and click push-in for 'OK'. This reduces the number of knobs and controls required on the front panel. The illumination is a visual highlight and enhances user operation of the equipment.





# THE COMPLETE PRODUCT RANGE



BODY-CASE



MINITEC



STYLE-CASE



SMART-CASE



SOFT-CASE



DATEC-POCKET-BOX



DATEC-MOBIL-BOX



DATEC-COMPACT



DATEC-CONTROL



HAND-TERMINAL



SENSO-CASE



CARRYTEC



ERGO-CASE



SLIM-CASE



CONNECT



SMART-PANEL



INTERFACE-TERMINAL



SMART-CONTROL



NET-BOX



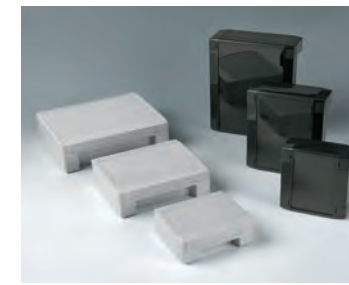
DIATEC



MINI-DATA-BOX



EASYTEC



SOLID-BOX



SMART-BOX



ROBUST-BOX



IN-BOX



SNAPTEC



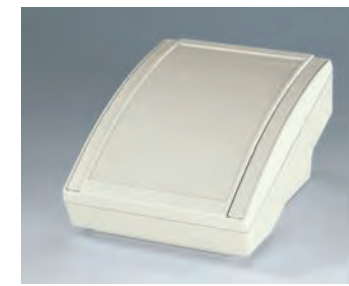
PROTEC



COMTEC



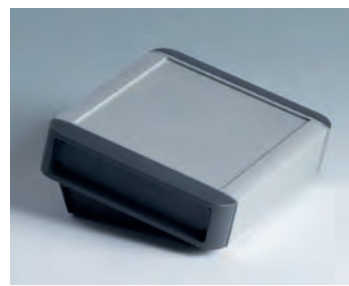
DESK CASES



DATEC-TERMINAL



UNITEC



SMART-TERMINAL



EVOTEC



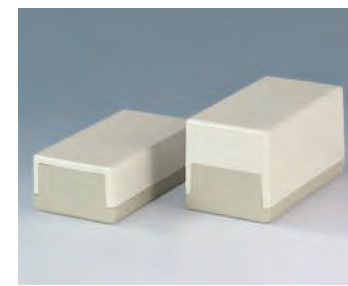
SHELL-TYPE CASES



TOPTEC



SYNERGY



FLAT-PACK CASE



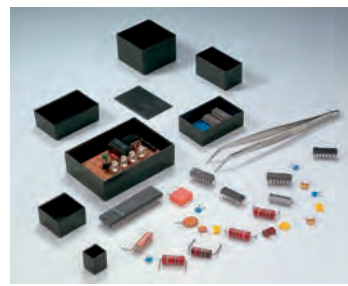
ART-CASE



RAILTEC B



RAILTEC C



POTTING BOXES



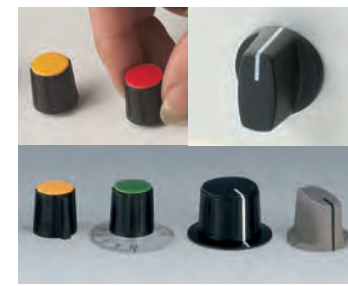
TOP-KNOBS



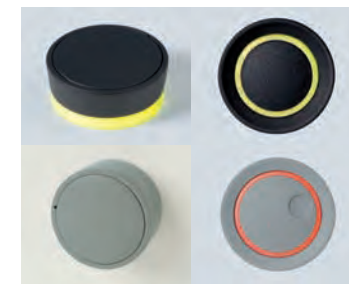
TUNING KNOBS 'CLASSIC'



COM-KNOBS



COMBINATION KNOBS



STAR-KNOBS



CONTROL-KNOBS



# CUSTOMISATION ACCORDING TO YOUR REQUIREMENTS

View our comprehensive standard range and select the enclosure or tuning knob that best matches your ideas, your components and the needs of your customers. Next simply tell us what you need for your product. Together we will discuss the modifications needed, your quality requirements, the price and delivery time.



LASER MARKING  
LACQUERING  
SPECIAL MATERIAL





# CUSTOMISING

## PRINTING

You can use printing on your product to give it a personal touch. It is also possible to indicate the function and usage. With precision craftsmanship, we can carry out the required printing to your satisfaction. Depending on the printing format and type of enclosure, we can offer you screen printing, tampon printing as well as digital printing.

## LASER MARKING

Laser marking is ideal for individual labelling, identifying or marking – especially for very small machine-readable markings such as QR codes, barcodes and DataMatrix codes. Consecutive numbering of parts and the addition of individual texts/logos is quick and easy.

## EMC SHIELDING

When it is a question of EMC and the protection of your electronics from external interference as well as increased internal emission noise, OKW Gehäusesysteme is your competent partner. To shield plastic parts, which offer no natural protection against electromagnetic radiation, we coat the inside of the enclosure with aluminium.

## SPECIAL MATERIAL

### INDIVIDUAL COLOURS

On request we can also produce many of our enclosures and tuning knobs in special colours. To match the colour you require, we can have the natural plastic material coloured and extruded to a high standard of reproduction. Individual colour adjustments are possible according to a sample, RAL or Pantone shades.

### SPECIAL MATERIAL "V-0"

Manufacturing of enclosures in flame-retardant plastic material on request.

## MACHINING

We can perform individual machining processes for you, quickly and reliably, for sample or series production quantities. You will receive your enclosures ready for the installation of your electronics.

Milling, tapping, engraving, drilling, countersinking and stamping – there is practically no limit to the variety of shapes and designs.

## LACQUERING

We can lacquer the enclosures and tuning knobs in any colour you wish so that it matches your application or your company branding. OKW offers a wide choice of lacquers. They include soft-touch, metallic effects and ESD conductive lacquer to prevent electrostatic discharges.

## PRODUCT LABELS

For lettering and colour design, we can digitally print product labels quickly and easily for small batches starting with 1 unit. Digital printing enables consecutive numbering, codes and technical specifications. Colour graduations are also possible.

## ASSEMBLY OF ACCESSORIES

We assemble your enclosure accessories including cable glands, belt/pocket clips, tilt foot bars, wall-mount kits, hinges, carry handles, keyboard foils, product labels, type plates, display windows, mounting pillars, seals and fibre-optics. The service also includes packaging to your specifications.





YOUR PARTNER:

**OKW**  
GEHÄUSE  
SYSTEME

Odenwälder Kunststoffwerke  
Gehäusesysteme GmbH  
Friedrich-List-Str. 3  
74722 Buchen, Germany  
Tel. +49 (0) 6281 | 404-00  
EMail [Info@okw.com](mailto:Info@okw.com)  
Web [www.okw.com](http://www.okw.com)



Turtle © by OKW Gehäusesysteme, Buchen, Germany.  
Subject to technical modification without notice.  
DPIOT21e. September 2023.