

# EURO CASE

## Large instrument enclosures

Our EURO CASE is smart, tough and very easy to assemble. The case shells, side and snap-in panels all have a strong clip together mechanism which does not require screws.

- plastic enclosures for desktop or portable electronic instruments
- plenty of space for operating elements and interfaces
- two standard widths: 42 TE & 63 TE
- four heights: 1 HE, 2 HE, 3 HE, 6 HE; side panels in three sizes (0.5 HE, 1 HE and 2 HE)
- additional side panels can be configured to allow for larger case heights i.e. for several assemblies to be stacked together in one unit
- injection-moulded reinforcing ribs ensure that these conveniently light cases have a high degree of torsional resistance and rigidity
- ergonomic operation when using the tilt feet, or the robust carry handle bar which is also designed for portable use.
- problems in cooling can be addressed by the snap-in panels with integrated ventilation slots
- robust clip-together assembly
- minimum amount of assembly required thanks to the special OKW snap-lock mechanism
- aluminium front panels ordered separately, simply slide-in
- customize the EURO CASE to your own corporate design, e.g. by selecting the side panels and snap-in panels in your company's colours
- protection class < IP 40
- internal screw pillars for PCBs etc.
- four non-slip case feet included



# EURO CASE

## Applications and Examples

- Measuring and control technology
- Peripheral devices
- Laboratory equipment
- Medical and wellness devices



Light therapy device

## Customising Options

What do you still need for your own very personal product? We can supply enclosures and tuning knobs with all necessary modifications for fitting your electronic components.

Customising options for Euro Case



Machining



Lacquering



Printing



Laser marking



Special material



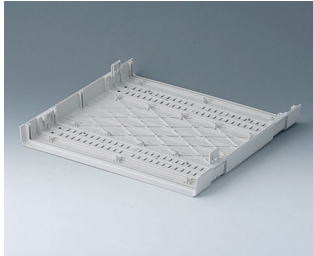
EMC shielding



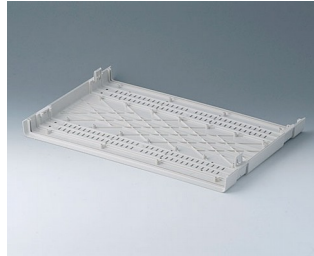
Installation / Assembly  
of accessories

# EURO CASE

## Select Versions



**A0114170**  
 Shell 42 TE  
 ABS (UL 94 HB)  
 off-white RAL 9002  
 260x250x27mm



**A0116170**  
 Shell 63 TE  
 ABS (UL 94 HB)  
 off-white RAL 9002  
 367x250x27mm



**A0214070**  
 EURO CASE 42 TE, without  
 handle  
 ABS (UL 94 HB)  
 off-white RAL 9002  
 260x250x54mm



**A0214170**  
 EURO CASE 42 TE, without  
 handle  
 ABS (UL 94 HB)  
 off-white RAL 9002  
 260x250x54mm



**A0214270**  
 EURO CASE 42 TE, without  
 handle  
 ABS (UL 94 HB)  
 off-white RAL 9002  
 260x250x54mm



**A0216070**  
 EURO CASE 63 TE, without  
 handle  
 ABS (UL 94 HB)  
 off-white RAL 9002  
 367x250x54mm



**A0216170**  
 EURO CASE 63 TE, without  
 handle  
 ABS (UL 94 HB)  
 off-white RAL 9002  
 367x250x54mm



**A0216270**  
 EURO CASE 63 TE, without  
 handle  
 ABS (UL 94 HB)  
 off-white RAL 9002  
 367x250x54mm



**A0224070**  
 EURO CASE 42 TE, without  
 handle  
 ABS (UL 94 HB)  
 off-white RAL 9002  
 260x250x98.5mm



**A0224170**  
 EURO CASE 42 TE, without  
 handle  
 ABS (UL 94 HB)  
 off-white RAL 9002  
 260x250x98.5mm



**A0224270**  
 EURO CASE 42 TE, without  
 handle  
 ABS (UL 94 HB)  
 off-white RAL 9002  
 260x250x98.5mm



**A0224470**  
 EURO CASE 42 TE, with handle  
 ABS (UL 94 HB)  
 off-white RAL 9002  
 260x250x98.5mm

# EURO CASE



**A0224570**  
EURO CASE 42 TE, with handle  
ABS (UL 94 HB)  
off-white RAL 9002  
260x250x98.5mm



**A0224670**  
EURO CASE 42 TE, with handle  
ABS (UL 94 HB)  
off-white RAL 9002  
260x250x98.5mm



**A0226070**  
EURO CASE 63 TE, without  
handle  
ABS (UL 94 HB)  
off-white RAL 9002  
367x250x98.5mm



**A0226170**  
EURO CASE 63 TE, without  
handle  
ABS (UL 94 HB)  
off-white RAL 9002  
367x250x98.5mm



**A0226270**  
EURO CASE 63 TE, without  
handle  
ABS (UL 94 HB)  
off-white RAL 9002  
367x250x98.5mm



**A0226470**  
EURO CASE 63 TE, with handle  
ABS (UL 94 HB)  
off-white RAL 9002  
367x250x98.5mm



**A0226570**  
EURO CASE 63 TE, with handle  
ABS (UL 94 HB)  
off-white RAL 9002  
367x250x98.5mm



**A0226670**  
EURO CASE 63 TE, with handle  
ABS (UL 94 HB)  
off-white RAL 9002  
367x250x98.5mm



**A0234070**  
EURO CASE 42 TE, without  
handle  
ABS (UL 94 HB)  
off-white RAL 9002  
260x250x143mm



**A0234170**  
EURO CASE 42 TE, without  
handle  
ABS (UL 94 HB)  
off-white RAL 9002  
260x250x143mm



**A0234270**  
EURO CASE 42 TE, without  
handle  
ABS (UL 94 HB)  
off-white RAL 9002  
260x250x143mm



**A0234470**  
EURO CASE 42 TE, with handle  
ABS (UL 94 HB)  
off-white RAL 9002  
260x250x143mm



**A0234570**  
EURO CASE 42 TE, with handle  
ABS (UL 94 HB)  
off-white RAL 9002  
260x250x143mm



**A0234670**  
EURO CASE 42 TE, with handle  
ABS (UL 94 HB)  
off-white RAL 9002  
260x250x143mm



**A0236070**  
EURO CASE 63 TE, without  
handle  
ABS (UL 94 HB)  
off-white RAL 9002  
367x250x143mm



**A0236170**  
EURO CASE 63 TE, without  
handle  
ABS (UL 94 HB)  
off-white RAL 9002  
367x250x143mm

# EURO CASE



**A0236270**  
EURO CASE 63 TE, without handle  
ABS (UL 94 HB)  
off-white RAL 9002  
367x250x143mm



**A0236470**  
EURO CASE 63 TE, with handle  
ABS (UL 94 HB)  
off-white RAL 9002  
367x250x143mm



**A0236570**  
EURO CASE 63 TE, with handle  
ABS (UL 94 HB)  
off-white RAL 9002  
367x250x143mm



**A0236670**  
EURO CASE 63 TE, with handle  
ABS (UL 94 HB)  
off-white RAL 9002  
367x250x143mm



**A0266070**  
EURO CASE 63 TE, without handle  
ABS (UL 94 HB)  
off-white RAL 9002  
367x250x276.5mm

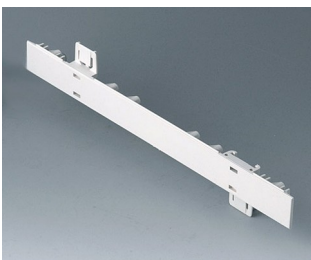


**A0266170**  
EURO CASE 63 TE, without handle  
ABS (UL 94 HB)  
off-white RAL 9002  
367x250x276.5mm

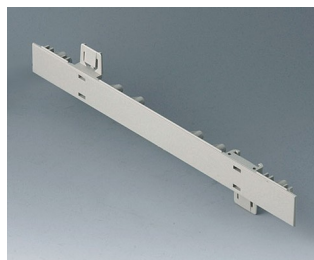


**A0266270**  
EURO CASE 63 TE, without handle  
ABS (UL 94 HB)  
off-white RAL 9002  
367x250x276.5mm

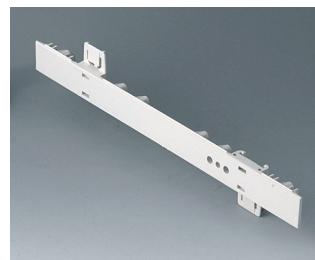
## System components to complete



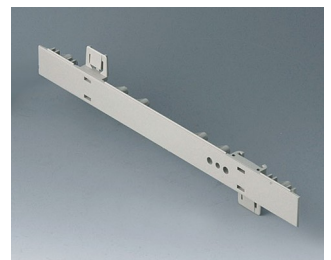
**A0105270**  
Side panel 0.5 HE  
ABS (UL 94 HB)  
off-white RAL 9002  
250x22.25mm



**A0105280**  
Side panel 0.5 HE  
ABS (UL 94 HB)  
pebble grey RAL 7032  
250x22.25mm

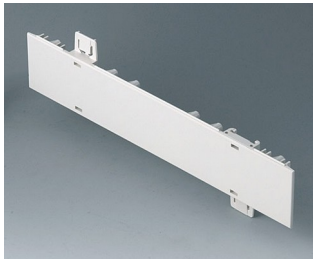


**A0106270**  
Side panel 0.5 HE, for handle mounting  
ABS (UL 94 HB)  
off-white RAL 9002  
250x22.25mm

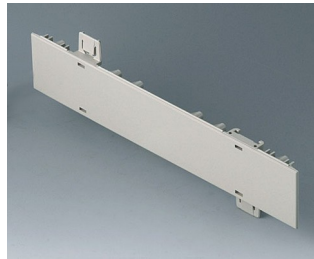


**A0106280**  
Side panel 0.5 HE, for handle mounting  
ABS (UL 94 HB)  
pebble grey RAL 7032  
250x22.25mm

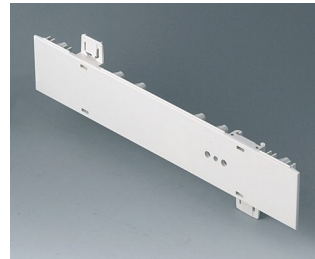
# EURO CASE



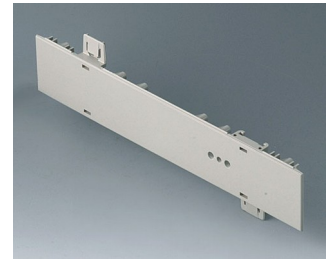
**A0110270**  
 Side panel 1 HE  
 ABS (UL 94 HB)  
 off-white RAL 9002  
 250x44.45mm



**A0110280**  
 Side panel 1 HE  
 ABS (UL 94 HB)  
 pebble grey RAL 7032  
 250x44.45mm



**A0111270**  
 Side panel 1 HE, for handle  
 mounting  
 ABS (UL 94 HB)  
 off-white RAL 9002  
 250x44.45mm



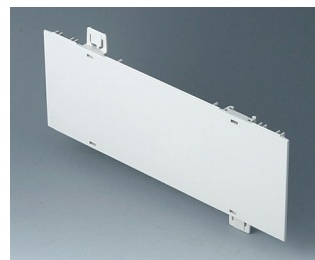
**A0111280**  
 Side panel 1 HE, for handle  
 mounting  
 ABS (UL 94 HB)  
 pebble grey RAL 7032  
 250x44.45mm



**A0114370**  
 Snap-in panel, without slots  
 ABS (UL 94 HB)  
 off-white RAL 9002



**A0116370**  
 Snap-in panel, without slots  
 ABS (UL 94 HB)  
 off-white RAL 9002



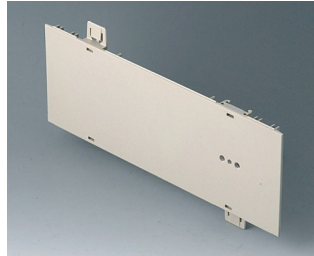
**A0120270**  
 Side panel 2 HE  
 ABS (UL 94 HB)  
 off-white RAL 9002  
 250x88.9mm



**A0120280**  
 Side panel 2 HE  
 ABS (UL 94 HB)  
 pebble grey RAL 7032  
 250x88.9mm



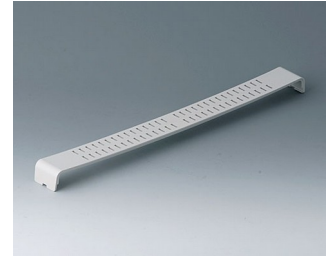
**A0121270**  
 Side panel 2 HE, for handle  
 mounting  
 ABS (UL 94 HB)  
 off-white RAL 9002  
 250x88.9mm



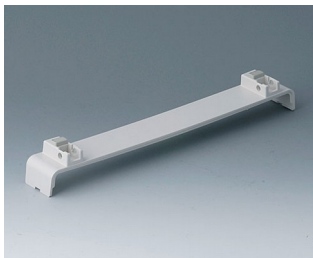
**A0121280**  
 Side panel 2 HE, for handle  
 mounting  
 ABS (UL 94 HB)  
 pebble grey RAL 7032  
 250x88.9mm



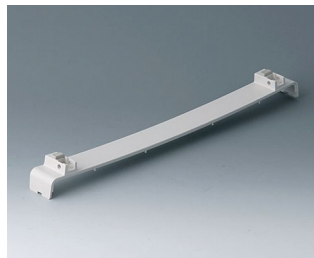
**A0124370**  
 Snap-in panel, with slots  
 ABS (UL 94 HB)  
 off-white RAL 9002



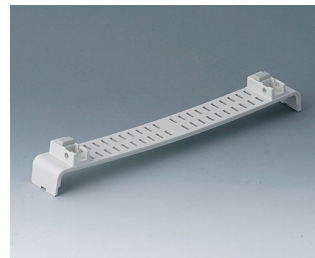
**A0126370**  
 Snap-in panel, with slots  
 ABS (UL 94 HB)  
 off-white RAL 9002



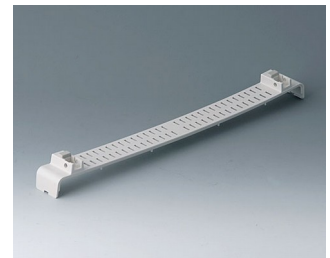
**A0134370**  
 Snap-in panel, without slots, with  
 feet  
 ABS (UL 94 HB)  
 off-white RAL 9002



**A0136370**  
 Snap-in panel, without slots, with  
 feet  
 ABS (UL 94 HB)  
 off-white RAL 9002



**A0144370**  
 Snap-in panel with, slots, with  
 feet  
 ABS (UL 94 HB)  
 off-white RAL 9002



**A0146370**  
 Snap-in panel, with slots, with  
 feet  
 ABS (UL 94 HB)  
 off-white RAL 9002

# EURO CASE



**A0344216**  
Handle 42 TE  
PA 6  
off-white RAL 9002



**A0344217**  
Handle 42 TE  
PA 6  
off-white RAL 9002



**A0344218**  
Handle 42 TE  
PA 6  
pebble grey RAL 7032



**A0346316**  
Handle 63 TE  
PA 6  
off-white RAL 9002

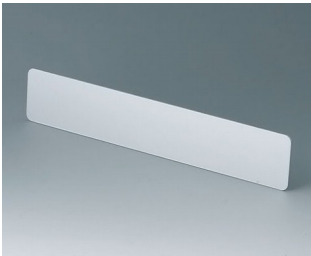


**A0346317**  
Handle 63 TE  
PA 6  
off-white RAL 9002



**A0346318**  
Handle 63 TE  
PA 6  
pebble grey RAL 7032

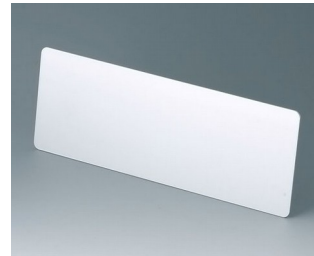
## Accessory to complete



**A0314270**  
Front / rear panel 42 TE 1 HE  
Aluminium  
matt anodised  
250.8x46.3x2mm



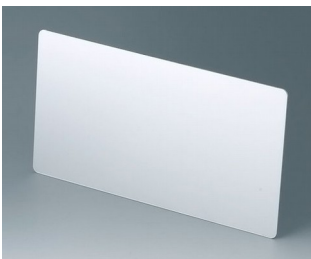
**A0316370**  
Front / rear panel 63 TE 1 HE  
Aluminium  
matt anodised  
357.8x46.3x2mm



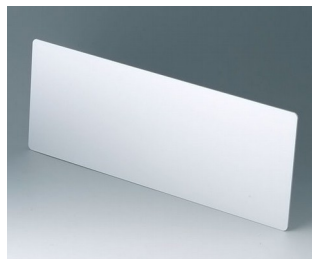
**A0324270**  
Front / rear panel 42 TE 2 HE  
Aluminium  
matt anodised  
250.8x90.7x2mm



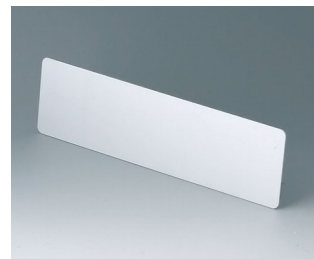
**A0326370**  
Front / rear panel 63 TE 2 HE  
Aluminium  
matt anodised  
357.8x90.7x2mm



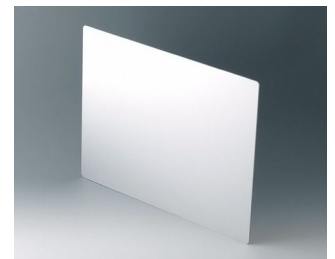
**A0334270**  
Front / rear panel 42 TE 3 HE  
Aluminium  
matt anodised  
250.8x135.2x2mm



**A0336370**  
Front / rear panel 63 TE 3 HE  
Aluminium  
matt anodised  
357.8x135.2x2mm



**A0354270**  
Front / rear panel 42 TE 1.5 HE  
Aluminium  
matt anodised  
250.8x68.5x2mm



**A0366370**  
Front / rear panel 63 TE 6 HE  
Aluminium  
matt anodised  
268.6x357.8x2mm

# EURO CASE

## Accessory "screws"



**A0306031**  
Self-tapping screws 3 x 6 mm  
(PZ1)



**A0308031**  
Self-tapping screws 3 x 8 mm  
(PZ1)



**A0308132**  
Self-tapping screw 3 x 8 mm  
(T10)  
Stainless steel

## Accessory



**A0350007**  
Tilt foot  
ABS (UL 94 HB)  
off-white RAL 9002

Subject to technical modification without notice. © by OKW Gehäusesysteme, Buchen/Germany.