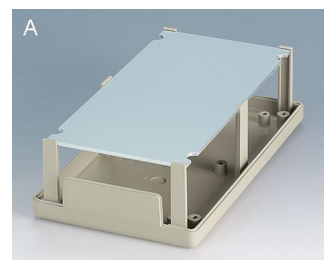
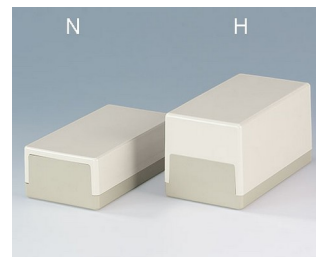
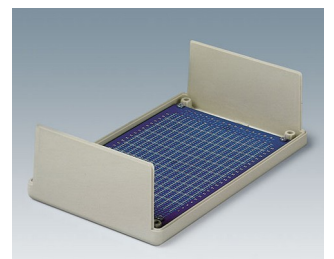
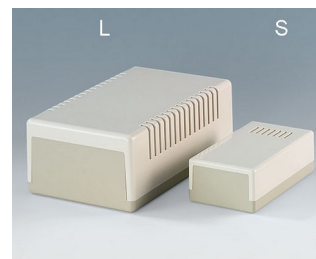
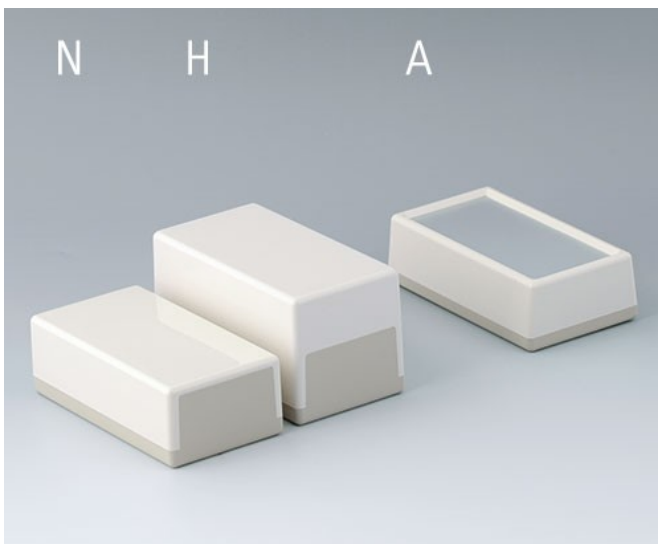


FLAT-PACK CASE

Multi-purpose plastic enclosures

Our FLAT-PACK CASES offer simple and low-priced enclosures for your electronics.

- large range of sizes and versions for table-top and wall mounting
- robust construction with tongue & groove design
- the bottom parts are open at the sides and are thus particularly useful for all installation and service work
- with low (N) and high (H) top part
- versions with handle bar for ergonomic operation or easy carrying
- with ventilation slots for components dissipating high heat (189 L)
- with slots on the top for miniature appliances with sound signal (120 S)
- type A models with aluminum front panels; operating elements are protected by a raised edge on the case
- protection class IP 40 (version without slots)
- internal screw pillars for PCBs etc.



FLAT-PACK CASE

Applications and Examples

Universal enclosures for electronic and electrotechnical devices, e.g.

- measuring and control instruments
- medical
- wellness and laboratory equipment
- and computer peripherals etc.



Suppressed electronic power controller

Customising Options

What do you still need for your own very personal product? We can supply enclosures and tuning knobs with all necessary modifications for fitting your electronic components.

Customising options for Flat-Pack Case



Machining



Lacquering



Printing



Laser marking



Special material



Installation / Assembly
 of accessories

FLAT-PACK CASE

Select Versions



A9010065
 FLAT-PACK CASES 100 N,
 Vers. I
 ABS (UL 94 HB)
 off-white RAL 9002
 100x50x25mm
 IP 40



A9011065
 FLAT-PACK CASES 100 H,
 Vers. I
 ABS (UL 94 HB)
 off-white RAL 9002
 100x50x40mm
 IP 40



A9020065
 FLAT-PACK CASES 120 N,
 Vers. I
 ABS (UL 94 HB)
 off-white RAL 9002
 120x65x40mm
 IP 40



A9020265
 FLAT-PACK CASE 120 S
 ABS (UL 94 HB)
 off-white RAL 9002
 120x65x40mm



A9021065
 FLAT-PACK CASE 120 H, Vers. I
 ABS (UL 94 HB)
 off-white RAL 9002
 120x65x65mm
 IP 40



A9030065
 FLAT-PACK CASES 150 N,
 Vers. I
 ABS (UL 94 HB)
 off-white RAL 9002
 150x80x50mm
 IP 40



A9030165
 FLAT-PACK CASES 150 N,
 Vers. II
 ABS (UL 94 HB)
 off-white RAL 9002
 150x80x50mm
 IP 40



A9031065
 FLAT-PACK CASE 150 H, Vers. I
 ABS (UL 94 HB)
 off-white RAL 9002
 150x80x80mm
 IP 40



A9032065
 FLAT-PACK CASES 150 N,
 Vers. I
 ABS (UL 94 HB)
 off-white RAL 9002
 150x80x55mm
 IP 40



A9040065
 FLAT-PACK CASES 189 N,
 Vers. I
 ABS (UL 94 HB)
 off-white RAL 9002
 189x110x60mm
 IP 40



A9040165
 FLAT-PACK CASES 189 N,
 Vers. II
 ABS (UL 94 HB)
 off-white RAL 9002
 189x110x60mm
 IP 40



A9041065
 FLAT-PACK CASE 189 H, Vers. I
 ABS (UL 94 HB)
 off-white RAL 9002
 189x110x97mm
 IP 40

FLAT-PACK CASE



A9041165
FLAT-PACK CASE 189 H, Vers. II
ABS (UL 94 HB)
off-white RAL 9002
189x110x97mm
IP 40



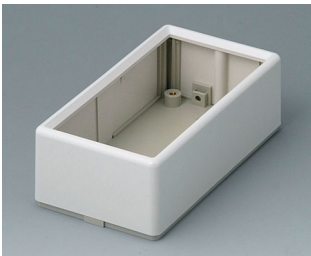
A9042065
FLAT-PACK CASE 189 H, Vers. I
ABS (UL 94 HB)
off-white RAL 9002
189x110x120mm
IP 40



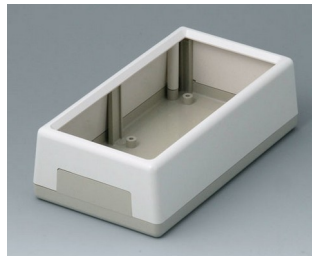
A9043065
FLAT-PACK CASES 189 N,
Vers. I
ABS (UL 94 HB)
off-white RAL 9002
189x110x70mm
IP 40



A9043265
FLAT-PACK CASE 189 L
ABS (UL 94 HB)
off-white RAL 9002
189x110x70mm



A9520165
FLAT-PACK CASE 120 A
ABS (UL 94 HB)
off-white RAL 9002
120x65x40mm
IP 40

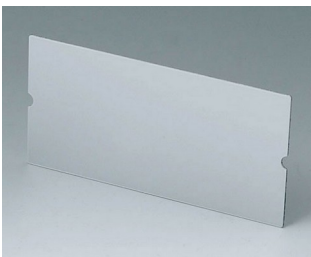


A9530165
FLAT-PACK CASE 150 A
ABS (UL 94 HB)
off-white RAL 9002
150x85x45mm
IP 40

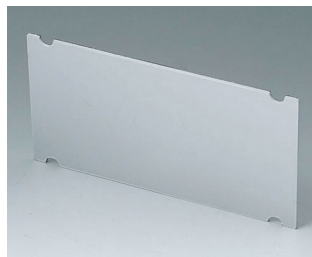


A9540165
FLAT-PACK CASE 210 A
ABS (UL 94 HB)
off-white RAL 9002
210x125x70mm
IP 40

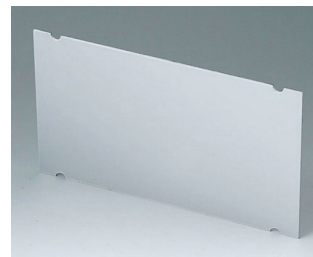
Accessory to complete



A9195201
Front panel 120 A
Aluminium
matt anodised
113x58x1mm



A9195301
Front panel 150 A
Aluminium
matt anodised
141.8x71.6x1.5mm



A9195401
Front panel 210 A
Aluminium
matt anodised
201x116x1.5mm

FLAT-PACK CASE

Accessory "wall/holder"



A910008
Snap-lock
PA 6 (UL 94 HB)
natural-coloured



A9120000
Assembly kit for wall mounting



A9130000
Assembly kit for wall mounting



A9132000
Assembly kit for wall mounting



A9140000
Assembly kit for wall mounting



B1350048
Wall suspension elements
ABS (UL 94 HB)
pebble grey RAL 7032



B1360048
Wall suspension elements
ABS (UL 94 HB)
pebble grey RAL 7032

Accessory "carrying"



A9172107
Belt/Pocket clip
ABS (UL 94 HB)
off-white RAL 9002
62x30mm

Accessory "screws"



A0306031
Self-tapping screws 3 x 6 mm
(PZ1)



A0308031
Self-tapping screws 3 x 8 mm
(PZ1)



A0308132
Self-tapping screw 3 x 8 mm
(T10)
Stainless steel

FLAT-PACK CASE

Accessory



A9100008
Snap-lock
PA 6 (UL 94 HB)
natural-coloured



A9207150
Anti-slide feet 6.5 x 2 mm
transparent



A9210290
Anti-slide feet 9.5 x 3.8 mm
transparent



A9250807
Tilt foot bar
ABS (UL 94 HB)
off-white RAL 9002



A9250817
Tilt foot bar
ABS (UL 94 HB)
off-white RAL 9002

Subject to technical modification without notice. © by OKW Gehäusesysteme, Buchen/Germany.