

# TILT FOOT BAR, TILT FEET

- Tilt and swivel carry handle bars made of plastic and diecast zinc. With matching anodised aluminium profile, cut to the correct width for your enclosure, and supplied as a separate component.
- For small plastic enclosures we also offer a range of tilt foot bars which can be fitted anywhere on the base, and provide an ergonomic reading angle.



## Customising Options

What do you still need for your own very personal product? We can supply enclosures and tuning knobs with all necessary modifications for fitting your electronic components.  
Customising options for Tilt foot bar, tilt feet



Machining



Printing



Laser marking



Special material



Installation / Assembly  
of accessories

# TILT FOOT BAR, TILT FEET

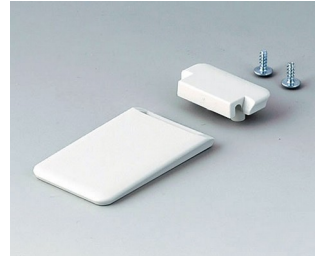
## Select Versions



**A0350007**  
Tilt foot  
ABS (UL 94 HB)  
off-white RAL 9002



**A0350008**  
Tilt foot  
ABS (UL 94 HB)  
pebble grey RAL 7032



**A9152057**  
Tilt foot bar  
ABS (UL 94 HB)  
off-white RAL 9002



**A9152058**  
Tilt foot bar  
ABS (UL 94 HB)  
lava



**A9152059**  
Tilt foot bar  
ABS (UL 94 HB)  
black RAL 9005



**A9209229**  
Anti-slide feet 8.5 x 2.2 mm  
black



**A9210180**  
Anti-slide feet 10,1 x 1.8 mm  
transparent



**A9210290**  
Anti-slide feet 9.5 x 3.8 mm  
transparent



**A9212330**  
Anti-slide feet 12 x 3.5 mm  
transparent



**A9250807**  
Tilt foot bar  
ABS (UL 94 HB)  
off-white RAL 9002



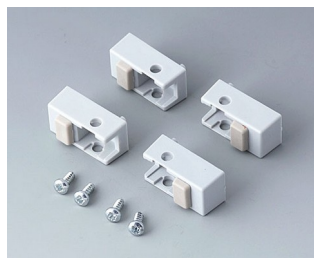
**A9250809**  
Tilt foot bar  
ABS (UL 94 HB)  
black RAL 9005



**A9250817**  
Tilt foot bar  
ABS (UL 94 HB)  
off-white RAL 9002



**A9250819**  
Tilt foot bar  
ABS (UL 94 HB)  
black RAL 9005



**A9257105**  
Case feet, Vers. I  
ABS (UL 94 HB)  
light grey RAL 7035



**A9257107**  
Case feet, Vers. I  
ABS (UL 94 HB)  
off-white RAL 9002

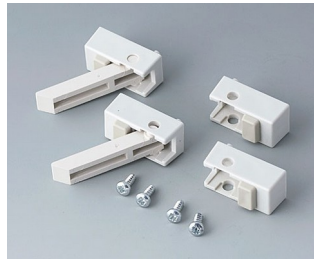


**A9257109**  
Case feet, Vers. I  
ABS (UL 94 HB)  
black RAL 9005

# TILT FOOT BAR, TILT FEET



**A9257205**  
Case feet, Vers. II  
ABS (UL 94 HB)  
light grey RAL 7035



**A9257207**  
Case feet, Vers. II  
ABS (UL 94 HB)  
off-white RAL 9002



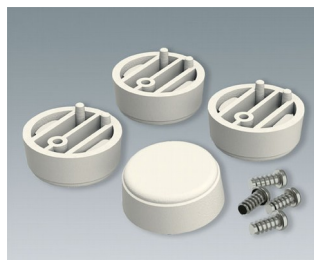
**A9257209**  
Case feet, Vers. II  
ABS (UL 94 HB)  
black RAL 9005



**A9257404**  
Case feet, Vers. I  
ABS (UL 94 HB)  
anthracite grey RAL 7016  
ø30x12mm



**A9257405**  
Case feet, Vers. I  
ABS (UL 94 HB)  
light grey RAL 7035  
ø30x12mm



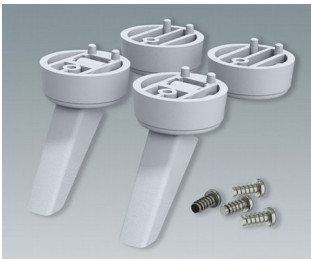
**A9257407**  
Case feet, Vers. I  
ABS (UL 94 HB)  
off-white RAL 9002  
ø30x12mm



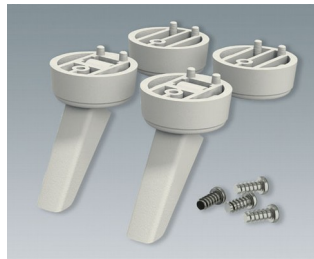
**A9257409**  
Case feet, Vers. I  
ABS (UL 94 HB)  
black RAL 9005  
ø30x12mm



**A9257504**  
Case feet, Vers. II  
ABS (UL 94 HB)  
anthracite grey RAL 7016  
ø30x12mm



**A9257505**  
Case feet, Vers. II  
ABS (UL 94 HB)  
light grey RAL 7035  
ø30x12mm



**A9257507**  
Case feet, Vers. II  
ABS (UL 94 HB)  
off-white RAL 9002  
ø30x12mm



**A9257509**  
Case feet, Vers. II  
ABS (UL 94 HB)  
black RAL 9005  
ø30x12mm

## Accessory



**A9207150**  
Anti-slide feet 6.5 x 2 mm  
transparent