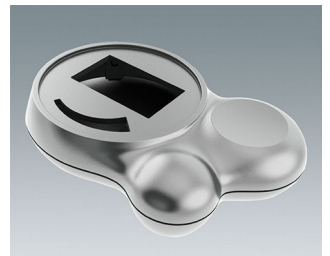


# LACQUERING

The colours can be produced in our own mixing unit according to RAL and in a wide range of Pantone shades. This guarantees consistent high quality and short delivery times. The colours can also be defined according to your sample or by arrangement.

- **Lacquers in different degrees of lustre**  
According to your needs, from matt to glossy. Matt lacquers prevent undesirable light reflections, and glossy lacquers offer a refined, modern look.
- **Metallic lacquer and colour tones**  
Finishes in a metallic look.
- **Soft-Touch**  
Lacquer like artificial leather to improve the feel of your product. Soft-Touch lacquer gives your products a feel as soft as velvet, ensuring pleasantly reliable operation of handheld instruments, for example. NEW: transparent Soft-Touch lacquer.
- **Antibacterial paint**  
A special protective lacquer which prevents bacteria from settling and multiplying.
- **ESD conductive lacquer**  
Special lacquer in black to prevent electrostatic discharges.

We will be pleased to advise you on the technical options available.



Subject to technical modification without notice. © by OKW Gehäusesysteme, Buchen/Germany.