

# PROTEC

## Square control centre

PROTEC enclosures have a modern and highly attractive square design with soft contours. As a result, these wall-mount and desktop housings are ideal for modern electronics applications, both indoors and outdoors.

- three sizes 140 / 180 / 220, each in the following versions:

### Version I

With a deep recessed interface area at the rear of the enclosure for the installation and protection of connectors, interfaces, switches and cables.

### Version II

As version I, but also with a snap-on cover for flush covering of the recessed interface area.

### Version III

As version I, but with a deep cover for the recessed interface area which is fitted by screws. The deep cover provides additional internal space for the electronics, cabling and connections.

- front operating panel ergonomically inclined by 20°
- recessed operating area for protecting a membrane keypad
- plenty of space for touch screens (PROTEC 140: 5.7"/14.5 cm, PROTEC 180: 7"/17.8 cm, PROTEC 220: 8.4"/21.3 cm)
- no visible fixings screws, all fixings hidden on the underside
- high-quality V-0 material in off-white (RAL 9002) and optional IP 65 protection class (sealing as an accessory) for tough applications
- sealed electronics compartment with 3 board levels; plenty of space for the components and assemblies
- concealed, flush wall mounting with removal prevention feature (accessory wall suspension element)
- corrosion-free stainless steel screws with reliable Torx heads
- non-slip rubber feet ensure that desktop devices do not skid



# PROTEC

## Applications and Examples

- Surveillance systems, access and security control
- Data acquisition systems
- Building services systems, central control units
- IoT/IIoT
- Smart factory
- Industry 4.0
- Gateways
- Data systems engineering
- Measuring and control technology
- Medical technology, healthcare



Audio Controls



Biofeedback meter



Hearing test device



Laboratory measuring device



Multimeter measuring device



Robot control



Table microphone / inter phone



Terminal for access control



Terminal for fire alarm systems



Video Monitoring

## Customising Options

What do you still need for your own very personal product? We can supply enclosures and tuning knobs with all necessary modifications for fitting your electronic components.  
Customising options for Protec

# PROTEC



Machining



Lacquering



Printing



Laser marking



Decor foils



EMC shielding



Installation / Assembly  
of accessories

## Select Versions



**B4414107**  
PROTEC 140, Vers. I  
ASA+PC (UL 94 V-0)  
off-white RAL 9002  
140x140x76mm  
IP 65 opt.



**B4414207**  
PROTEC 140, Vers. II  
ASA+PC (UL 94 V-0)  
off-white RAL 9002  
140x140x76mm  
IP 65 opt.



**B4414307**  
PROTEC 140, Vers. III  
ASA+PC (UL 94 V-0)  
off-white RAL 9002  
140x160x76mm  
IP 65 opt.



**B4418107**  
PROTEC 180, Vers. I  
ASA+PC (UL 94 V-0)  
off-white RAL 9002  
180x180x92mm  
IP 65 opt.



**B4418207**  
PROTEC 180, Vers. II  
ASA+PC (UL 94 V-0)  
off-white RAL 9002  
180x180x92mm  
IP 65 opt.



**B4418307**  
PROTEC 180, Vers. III  
ASA+PC (UL 94 V-0)  
off-white RAL 9002  
180x201x92mm  
IP 65 opt.



**B4422107**  
PROTEC 220, Vers. I  
ASA+PC (UL 94 V-0)  
off-white RAL 9002  
220x220x108mm  
IP 65 opt.



**B4422207**  
PROTEC 220, Vers. II  
ASA+PC (UL 94 V-0)  
off-white RAL 9002  
220x220x108mm  
IP 65 opt.

# PROTEC

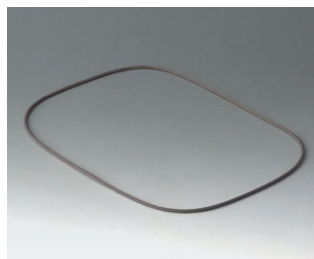


**B4422307**  
PROTEC 220, Vers. III  
ASA+PC (UL 94 V-0)  
off-white RAL 9002  
220x243x108mm  
IP 65 opt.

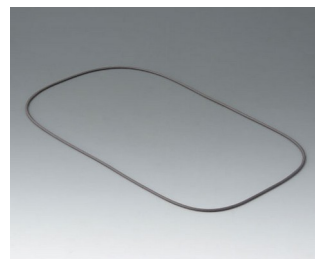
## Accessory "protection"



**B4514030**  
Sealing 140



**B4518030**  
Sealing 180

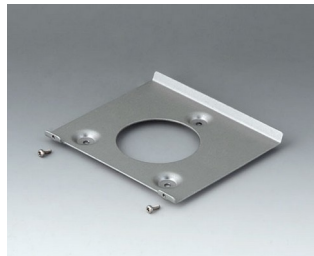


**B4522030**  
Sealing 220

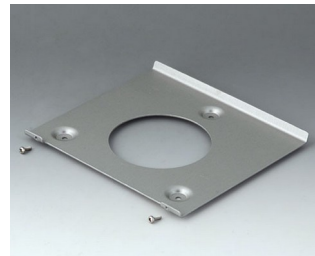
## Accessory "wall/holder"



**B4514101**  
Wall suspension element 140  
Aluminium



**B4518101**  
Wall suspension element 180  
Aluminium



**B4522101**  
Wall suspension element 220  
Aluminium

## Accessory "screws"



**A0305031**  
Self-tapping screws 2.5 x 6 mm  
(PZ1)



**A0325060**  
Self-tapping screw 2.5 x 6 mm  
(T8)  
Stainless steel