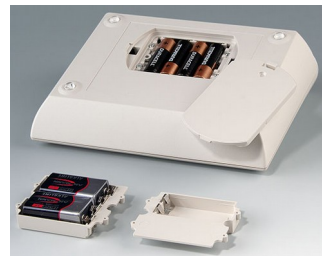


# COMTEC

## Ergonomic sloping front plastic enclosures

Modern, flat styling characterises the COMTEC family of plastic enclosures. Rounded surfaces give the users a soft feeling and emphasize the ease of use.

- ergonomic keypad enclosures with operating face inclined at 10°, a real asset when operating and reading
- large area for interfaces at the top, ideal for D-sub-plug connectors, round connectors etc.
- ideal for desktop or wall mounted electronics
- seven sizes, two colours
- flat or raised bottom part for large-volume components
- version I without battery compartment lid
- version II with battery compartment lid
- screw-in battery cradles 4 x AA, 1 x 9 V or 2 x 9 V cells are ordered separately for version II cases
- recess in top for a membrane keypad or label
- protection class IP 40
- self-adhesive case feet ensure reliable desk-top positioning
- wall suspension element as accessory
- internal fastening pillars for PCBs and components



# COMTEC

## Applications and Examples

- Data collection terminals
- Communications devices
- Access control
- Security
- Medical, laboratory, wellness
- Health care
- Point-of-sale systems
- Measuring and controlling
- Industrial regulation



Controller for LED lighting in image processing and microscopy



EMG bio-feedback for incontinence diagnostics and therapy



Stationary system for long-term EEG recordings



System for leak detection in leisure vehicles



System for preventing electrostatic charges

## Customising Options

What do you still need for your own very personal product? We can supply enclosures and tuning knobs with all necessary modifications for fitting your electronic components.

Customising options for Comtec

# COMTEC



Machining



Lacquering



Printing



Laser marking



Decor foils



Special material



EMC shielding



Installation / Assembly  
of accessories

## Select Versions



**A0612007**  
COMTEC 120 F, Vers. I  
ABS (UL 94 HB)  
off-white RAL 9002  
120x150x42.8mm  
IP 40



**A0612009**  
COMTEC 120 F, Vers. I  
ABS (UL 94 HB)  
black RAL 9005  
120x150x42.8mm  
IP 40



**A0612107**  
COMTEC 120 H, Vers. I  
ABS (UL 94 HB)  
off-white RAL 9002  
120x150x62.8mm  
IP 40



**A0612109**  
COMTEC 120 H, Vers. I  
ABS (UL 94 HB)  
black RAL 9005  
120x150x62.8mm  
IP 40



**A0615007**  
COMTEC 150 F, Vers. I  
ABS (UL 94 HB)  
off-white RAL 9002  
150x200x51.5mm  
IP 40



**A0615009**  
COMTEC 150 F, Vers. I  
ABS (UL 94 HB)  
black RAL 9005  
150x200x51.5mm  
IP 40



**A0615107**  
COMTEC 150 H, Vers. I  
ABS (UL 94 HB)  
off-white RAL 9002  
150x200x71.5mm  
IP 40



**A0615109**  
COMTEC 150 H, Vers. I  
ABS (UL 94 HB)  
black RAL 9005  
150x200x71.5mm  
IP 40

# COMTEC



**A0615117**  
COMTEC 150 H, Vers. II  
ABS (UL 94 HB)  
off-white RAL 9002  
150x200x71.5mm  
IP 40



**A0615119**  
COMTEC 150 H, Vers. II  
ABS (UL 94 HB)  
black RAL 9005  
150x200x71.5mm  
IP 40



**A0620007**  
COMTEC 200 F, Vers. I  
ABS (UL 94 HB)  
off-white RAL 9002  
200x150x42.8mm  
IP 40



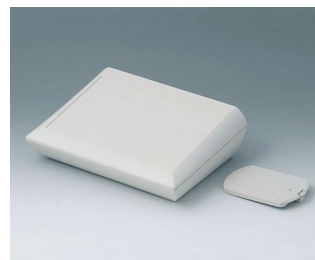
**A0620009**  
COMTEC 200 F, Vers. I  
ABS (UL 94 HB)  
black RAL 9005  
200x150x42.8mm  
IP 40



**A0620107**  
COMTEC 200 H, Vers. I  
ABS (UL 94 HB)  
off-white RAL 9002  
200x150x62.8mm  
IP 40



**A0620109**  
COMTEC 200 H, Vers. I  
ABS (UL 94 HB)  
black RAL 9005  
200x150x62.8mm  
IP 40



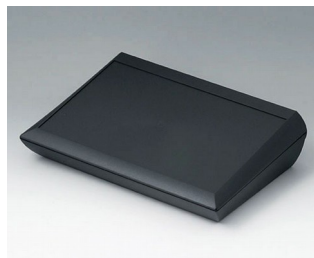
**A0620117**  
COMTEC 200 H, Vers. II  
ABS (UL 94 HB)  
off-white RAL 9002  
200x150x62.8mm  
IP 40



**A0620119**  
COMTEC 200 H, Vers. II  
ABS (UL 94 HB)  
black RAL 9005  
200x150x62.8mm  
IP 40

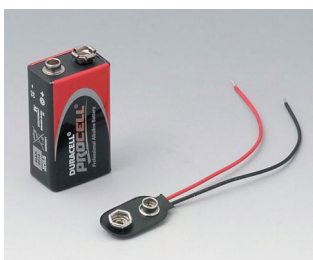


**A0629107**  
COMTEC 290 H, Vers. I  
ABS (UL 94 HB)  
off-white RAL 9002  
290x200x75.5mm  
IP 40



**A0629109**  
COMTEC 290 H, Vers. I  
ABS (UL 94 HB)  
black RAL 9005  
290x200x75.5mm  
IP 40

## Accessory "battery"



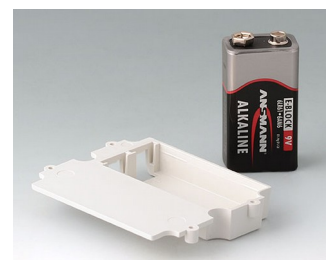
**A9160003**  
Plug-in contact, 1 x 9 V (PP3)



**A9161002**  
Set of battery clips, 2 x 9 V or 4 x  
AA  
Steel  
tin-plated



**A9174002**  
Battery compartment, 2 x 9 V  
ABS (UL 94 HB)  
off-white RAL 9002

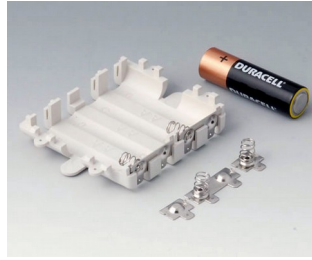


**A9174003**  
Battery compartment, 1 x 9 V  
ABS (UL 94 HB)  
off-white RAL 9002

# COMTEC



**A9174006**  
Set of battery clips, 1 x 9 V  
Steel  
tin-plated



**A9345217**  
Set of battery compartment, 4 x  
AA  
ABS (UL 94 HB)  
off-white RAL 9002

## Accessory "wall/holder"



**B1350048**  
Wall suspension elements  
ABS (UL 94 HB)  
pebble grey RAL 7032



**B1360048**  
Wall suspension elements  
ABS (UL 94 HB)  
pebble grey RAL 7032

## Accessory "screws"



**A9199008**  
Set of screws

Subject to technical modification without notice. © by OKW Gehäusesysteme, Buchen/Germany.